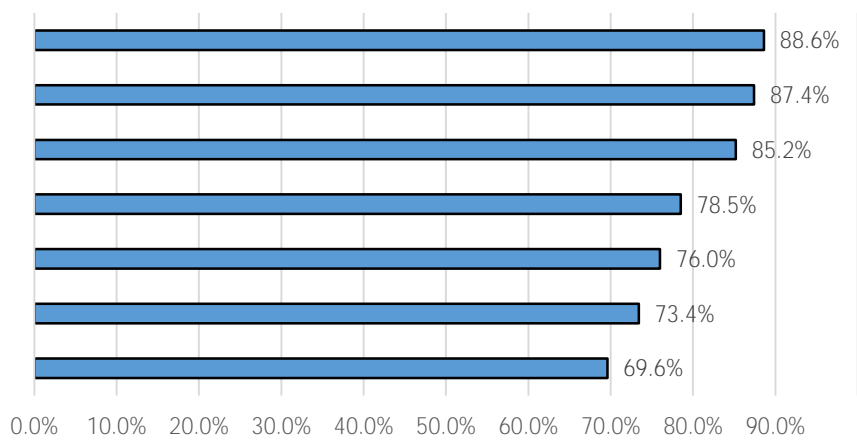


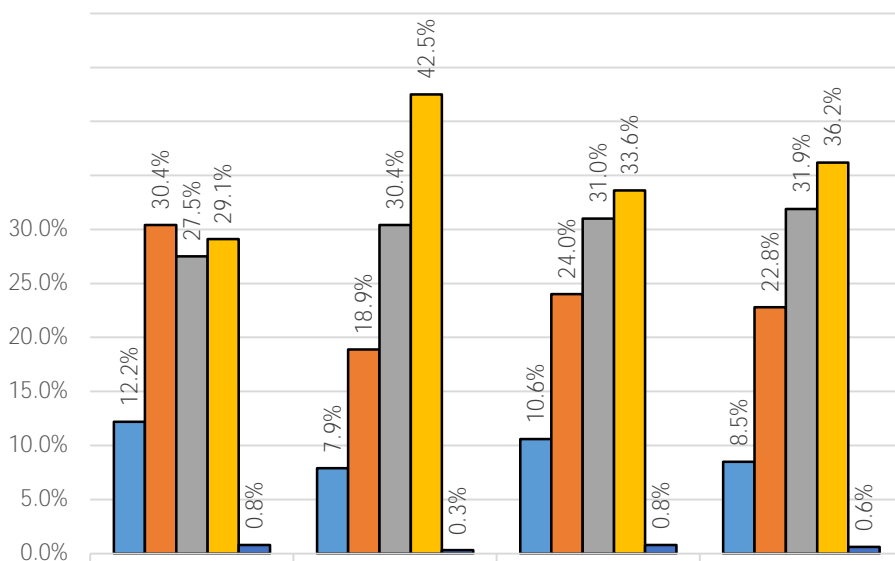
Life in Hampton Roads Survey Press Release #2

Crime and Politics

This report examines regional and sub-regional perceptions of crime and politics from the 2015

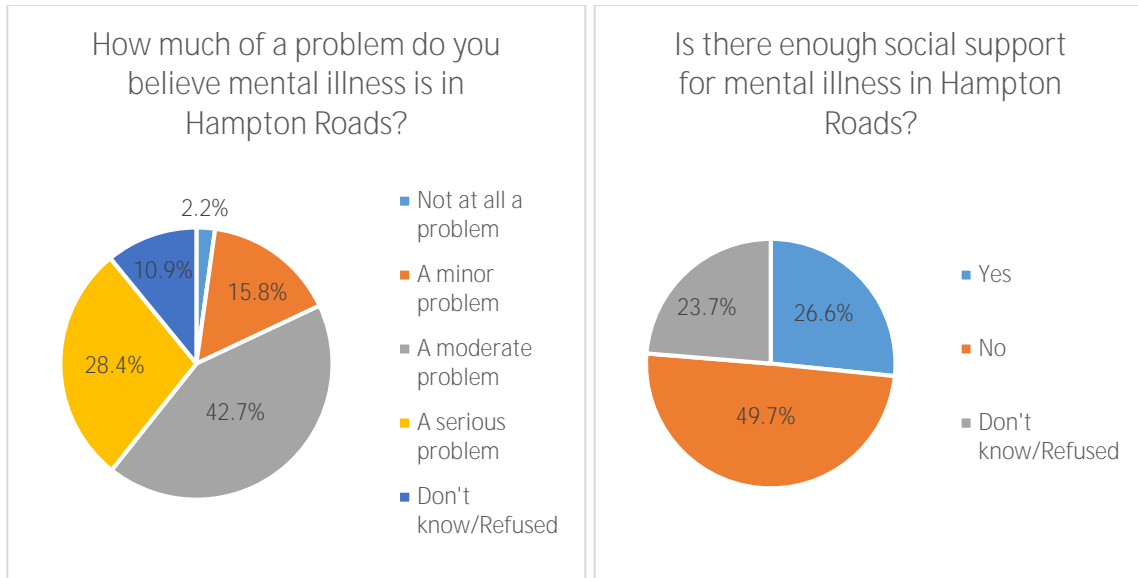


Respondents were also asked how much they trust the local police. The majority of respondents (83.2%) indicated they either trust the police a great deal (42.9%) or trust the police somewhat (40.3%). Only 6.3 percent reported not trusting the police at all and another 9.5 percent reported not trusting the police much.



Hampton Roads residents were also asked whether or not they have experienced identity theft, where someone stole their personal or financial information. Almost one-third of respondents said they had experienced identity theft (31.3%).

Overall, satisfaction with the local police is high among Hampton Roads residents, but somewhat diminished. The overall percentage for satisfaction with the local police has decreased every year since 2012. Trust of local police was also high among Hampton Roads residents. While most Hampton Roads



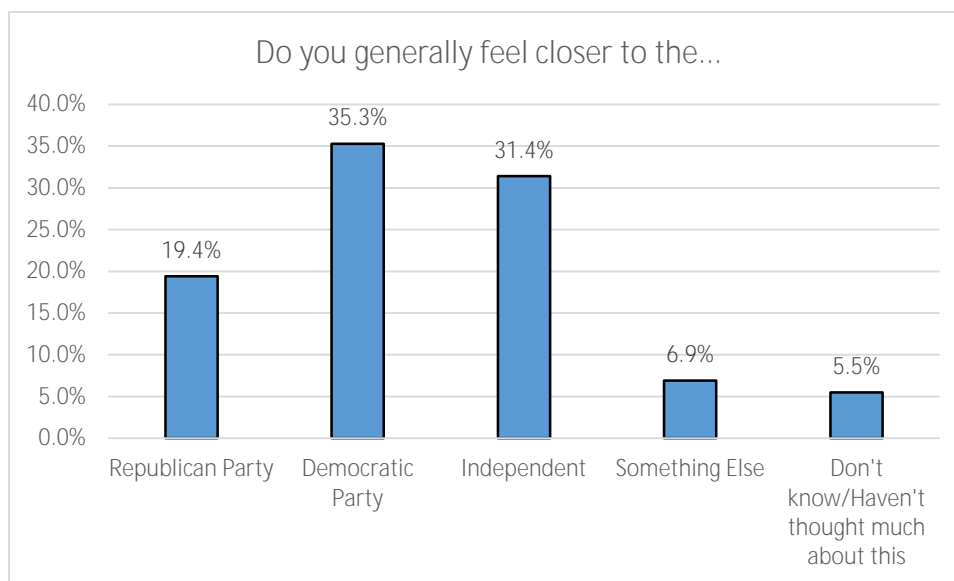
The majority of respondents perceive that homelessness and mental illness are a problem to some degree in Hampton Roads. Roughly half of respondents feel that there is not enough social support for the homeless or the mentally ill in Hampton Roads. Taking the analysis a step further, excluding invalid cases (i.e., don't know/refused) and combining those that believe mental illness or homelessness was a moderate or serious problem, the data show that 70.4 percent of Hampton Roads residents believe these issues to be problematic. Additionally, we find that 65.1 percent believe there is not enough support for the mentally ill or the homeless. As might be expected, there is a strong correlation between believing there is a problem and believing there is not enough support for these individuals ($p < .01$). Just over half (52.9%) of those who did not believe homelessness and mental illness were a moderate or serious problem did believe that there was not enough support for these individuals. However, the vast majority (81.4%) of those who believed these problems to be serious or moderate also believed that there was not enough support.

Politics

Local politics are of central importance for the prosperity and success of the region. Respondents were asked a variety of questions about several topics ranging from political questions including party affiliation, political attitudes and voter registration. The 883 participants gave a wide variety of answers to these questions and while much of the data reflects response patterns seen in years past, there are some results that have changed pointedly when compared to past years.

Political Affiliation and Attitudes

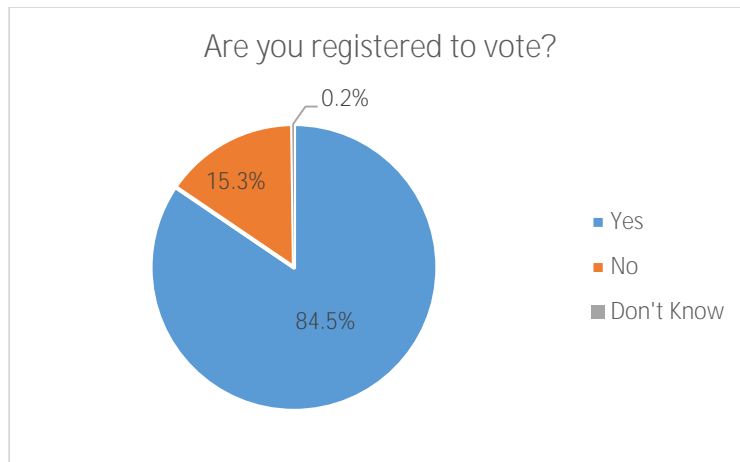
Respondents were asked what political party they generally feel closer to. A larger proportion of respondents reported feeling closer to the Democratic Party (35.3%) or being Independent (31.4%). Only 19.4 percent reported feeling closer to the Republican Party and another 6.9 percent reported feeling closer to something else.



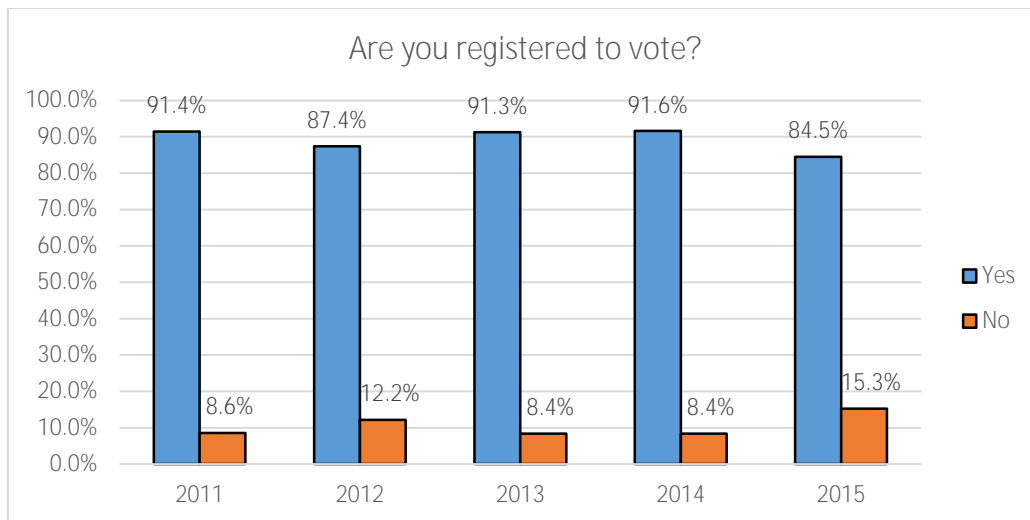
This year marked an important drop in the percentage of Hampton Roads residents identifying as Independent since 2011 following slight increases in 2011 and 2014. In 2011, 31 percent reported feeling closer to the Independents, 31.8 percent in 2012, 33.1 percent in 2013, 34.1 percent in 2014, and 31.4 percent in 2015. The Democratic Party saw a small increase in percentage in 2015; up to 35.3 percent from 31.3 percent in 2014. The Republican Party saw an almost 5 percent decline between 2011 and

2012 (26.4% and 21.7%, respectively), then stayed consistent with 22.4 percent in 2013 and 22 percent in 2014. This year the Republican Party reported its lowest percentag

were registered to vote, this percentage is the lowest reported in the past five years, including 2014, which showed 91.6 percent of respondents saying they were registered to vote.



Since 2011, at least 90 percent of respondents have reported being registered to vote, except in 2012 when only 87.4 percent reported being registered to vote and this year when only 84.5 percent reported being registered to vote.



All Life in Hampton Roads Data Analyses will be placed on the Social Science Research Center website as they are released (<http://www.odu.edu/al/centers/ssrc>). Follow-up questions about the 2015 Life in Hampton Roads survey should be addressed to:

Randy Gainey, PhD
Faculty Director
The Social Science Research Center
Professor of Sociology and Criminal Justice
Old Dominion University
757-683-4794 (office)
rgainey@odu.edu

Or

Tancy Vandecar-Burdin, PhD
Associate Director
The Social Science Research Center
Old Dominion University
757-683-3802 (office)
tvandeca@odu.edu