



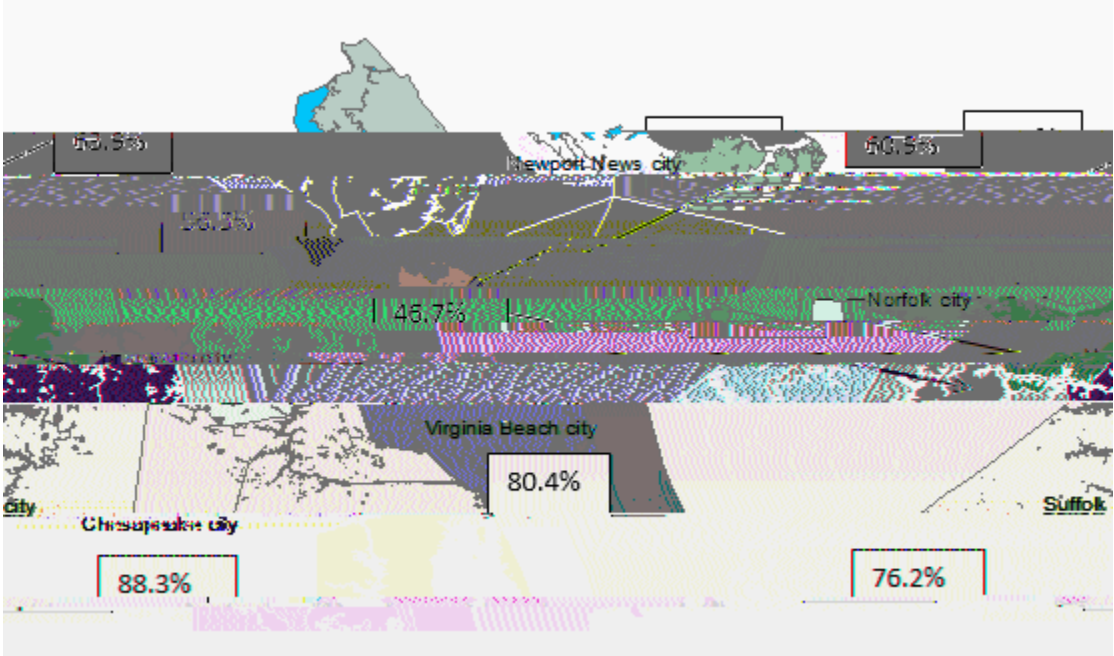
2015, 72.9

Home Ownership	2014	2015	2016	2017	2018

Perceptions of city quality of life varied significantly across the Hampton Roads region ( $p < .05$ ). At

+

. +B89=?R+U=97+V%86=97+#>+W=>&+  
 F##\$+#)+DE\* &66&?9+

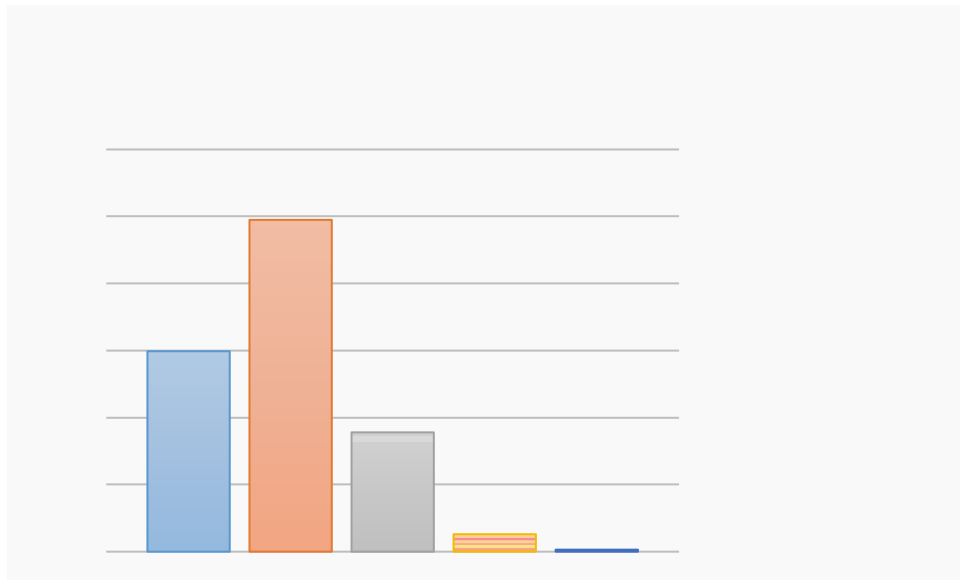


###PPAQ\*111+(989-(9=\*867+(-R?>=\*8?9%:2198-6&\$-9&(9+

+

### Neighborhood Quality of Life

Overall, respondents reported very high ratings for quality of life in their neighborhood. The majority of respondents (79.4%) rated the quality of life in their neighborhood as either excellent or good. In contrast, only 20.4 percent of respondents rated the quality of life in their neighborhood as fair or poor. Overall, quality of life was rated the highest (excellent and good) for respondent’s neighborhood (79.4%), followed by city of residence (71.0%), and finally Hampton Roads as a whole (70.1%).

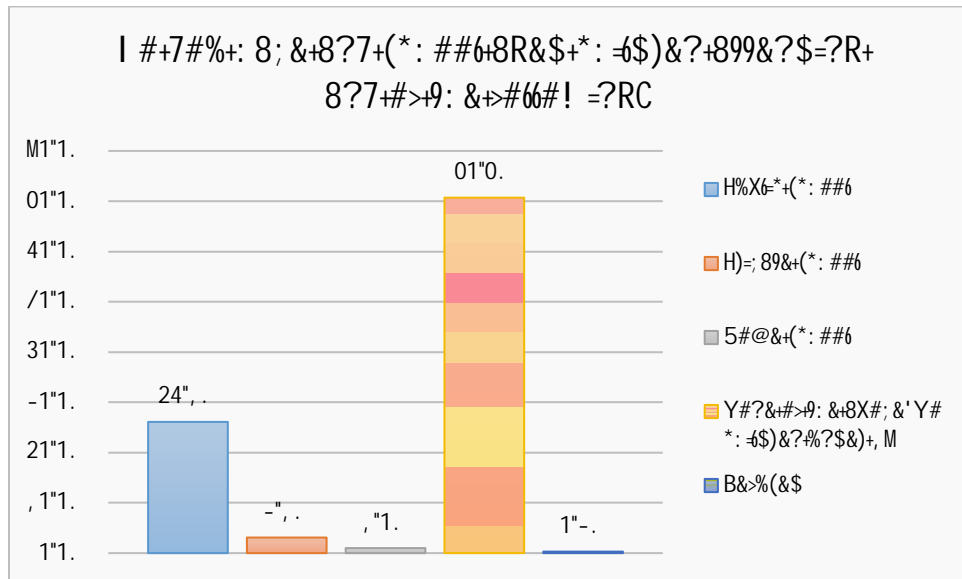


Across years, a strong majority of respondents rated the quality of life in their neighborhoods as good or excellent. While the total percentage of respondents that rated the quality of life in their neighborhoods as good or excellent remained similar to previous years, there was a considerable decrease in respondents who rated the quality of life in their neighborhoods as excellent (29.9%). This percentage had seen small increases in each of the previous four years (35.5%, 36.4%, 37.3%, and 37.8%, respectively). Additionally, 2018 saw a slight increase in respondents rating the quality of life in their neighborhood as poor (2.6%) compared to only 1.0 percent in 2017.

In summary, the overall quality of life in Hampton Roads remains relatively consistent with past years. Over 70 percent rate the overall quality of life in Hampton Roads as excellent or good. Although there were some differences between cities in the reported quality of life, respondents reported a higher quality of life in their neighborhoods compared to the city or region as a whole.

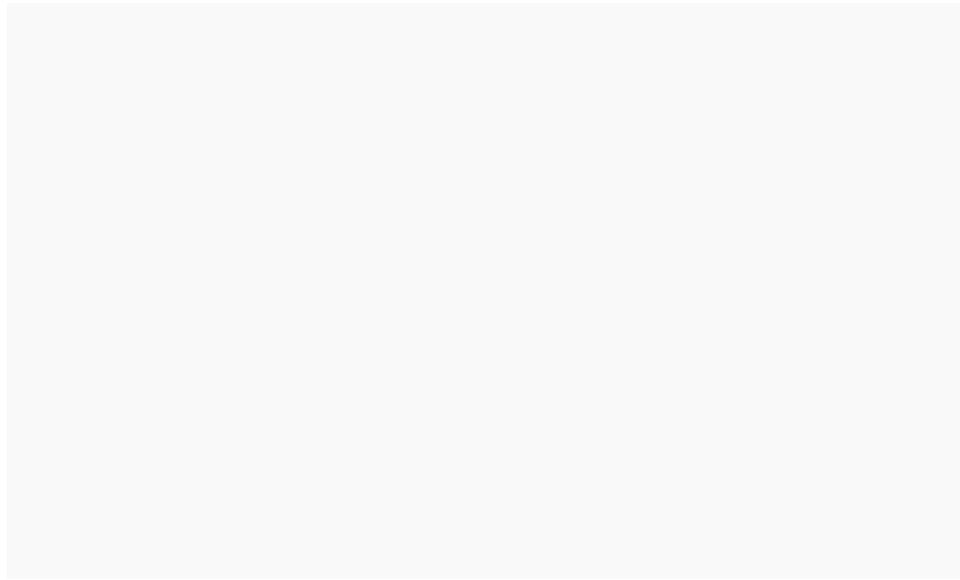
### Perceptions of Public School Systems

We wanted to inquire if parents were choosing public school, private school, or home schooling for their children. Most (70.7%) of our respondents did not have children, or had children who were over 18 years old and not in school. About one-quarter of respondents indicated that they have children enrolled in public school (26.1%). Only 3.1 percent of the respondents indicated that they have children who are enrolled in private school. Home school was the least frequent type of school at a mere 1.0 percent.



For respondents who previously told us that they did not have school-aged children, we asked, “Even though you may not have children attending public schools, how would you rate the quality of your local public school system?” Less than half (48.8%) of these respondents rated the public school system as excellent (15.6%) or good (33.2%), while others rated the school system as fair (26.1%) or poor

(16.3%). It is worth noting that a slightly higher percentage of these respondents without school-aged children rated the public school systems as poor than excellent.



Those respondents who do have school-aged children rated the public schools more favorably than those without children in local schools, particularly those rating them as excellent. While the majority (59.2%) of respondents with school-aged children rated the public school system as excellent (28.0%) or good (31.2%), others rated the school system as fair (26.4%) or poor (13.4%).



There were significant differences in ratings of the local public school systems by city. Virginia Beach had the highest percentage of residents rating the local public school systems as excellent or good (71.1%), followed by Chesapeake (62.9%) and Portsmouth (53.8%). At the other end of the spectrum, Newport News (39.3%), Suffolk (37.9%) and Norfolk (33.0%) had the lowest percentage of residents ranking the local public school systems as excellent or good.

---

All Life in Hampton Roads Data Analyses will be placed on the Social Science Research Center website as they are released ([: 99A\[' ' ! ! "#\\$%&\\$%' 86' \\*&?9&\)' \(\(\)\\*](#)). Follow-up questions about the 2018 Life in Hampton Roads survey should be addressed to:

Randy Gainey, PhD  
Faculty Director  
The Social Science Research Center  
Professor of Sociology and Criminal Justice  
Old Dominion University  
757-683-4794 (office)  
[rgainey@odu.edu](mailto:rgainey@odu.edu)

Or

Tancy Vandecar-Burdin, PhD  
Associate Director